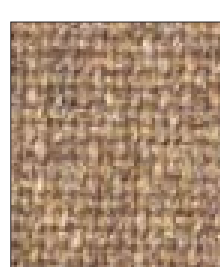
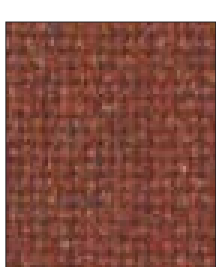


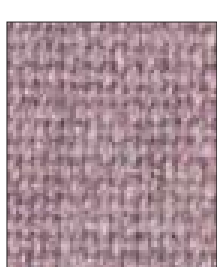
# Advantage & Ace



Sandvale AD016



Tawny AD098



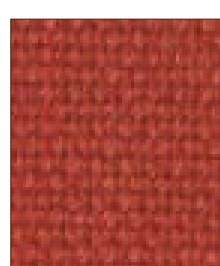
Dusk AD007



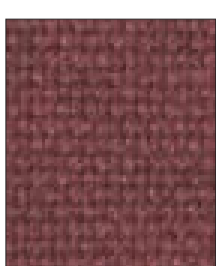
Sea Blue AD017



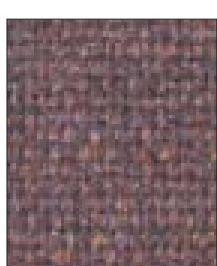
Granite AD009



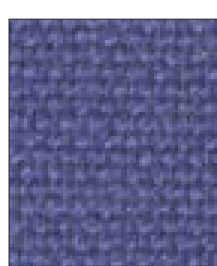
Cinnamon AD111



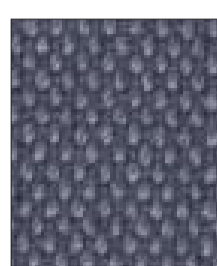
Rosevale AD015



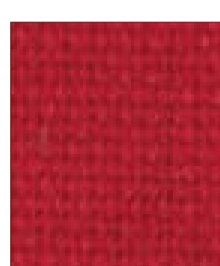
Bouquet AD096



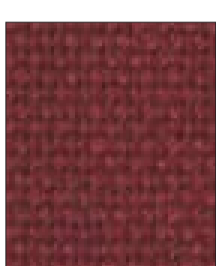
Adriatic AD001



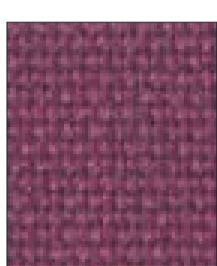
Hare AD210



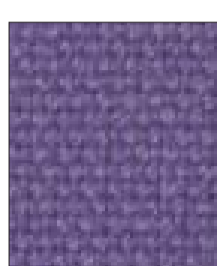
Red AD014



Wine AD020



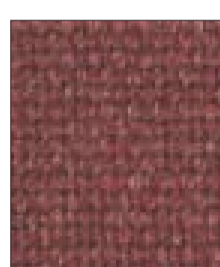
Raspberry AD127



Purple AD118



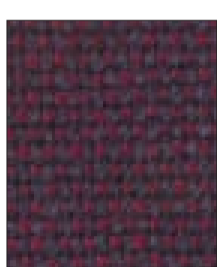
Fjord AD125



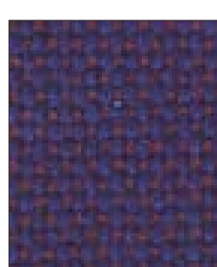
Cranberry AD005



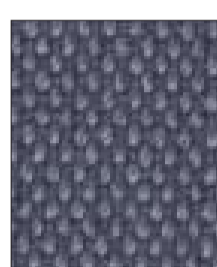
Fox AD119



Damson AD093



Bugle AD211



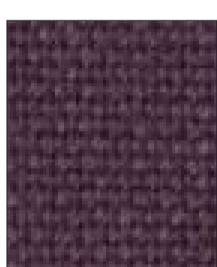
Chickadee AD212



Peat AD131



Grape AD029



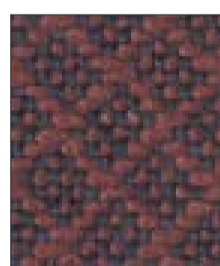
Beetroot AD116



Trent AD214



Nightshade AD011



Match AE041



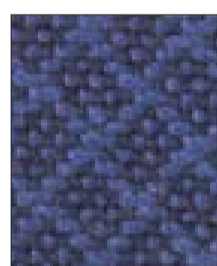
Racket AE056



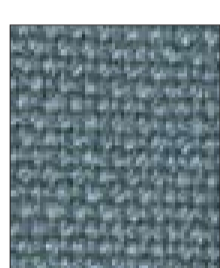
Set AE057



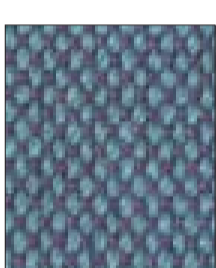
Umpire AE064



Title AE046



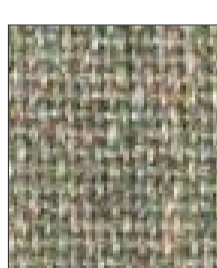
Riviera AD123



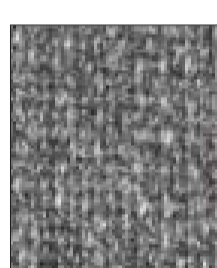
Azure AD057



Aquarius AD031



Crystal AD006



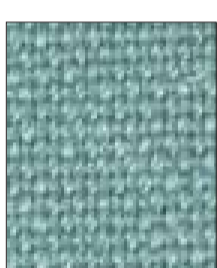
Mineral AD010



Delta Blue AD026



Turquoise AD027



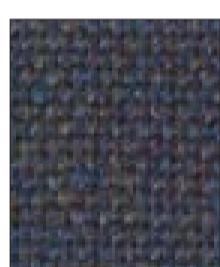
Kingfisher AD122



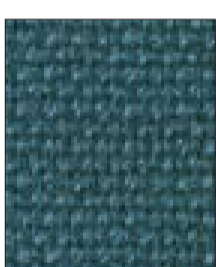
Leaf AD030



Pewter AD072



Lakeside AD097



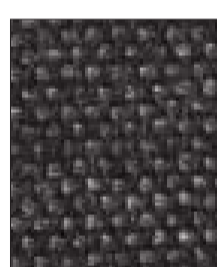
Trident AD124



Aqua AD002



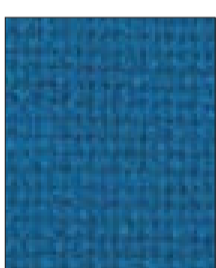
Oasis AD117



Graphite AD066



Clipper AD126



Largo AD112



Teal AD120



Persian AD101



Charcoal AD028



Cobalt AD004



Hobbit AD213



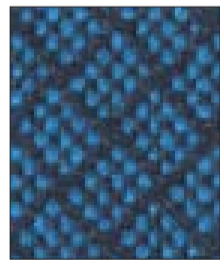
Shamrock AD121



Aztec AD113



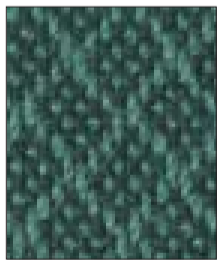
Black AD055



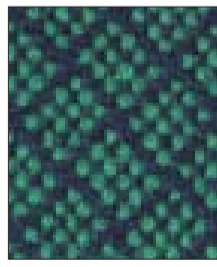
Smash AE058



Court AE045



Rally AE065



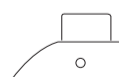
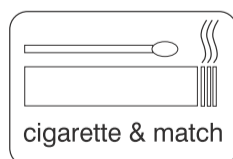
Volley AE059



Ashe AE061

[www.camirafabrics.com/samples](http://www.camirafabrics.com/samples)

To order samples, visit our on-line sample service.



## UK

Composition	30% Wool, 70% Polypropylene
Weight	360g/m <sup>2</sup> ±5% (470g/lin.m. ±5%)
Width	130cm ±2% Usable
*Abrasion Resistance	90,000 Martindale cycles with a 5 year guarantee of wearability (full details available)
Flammability	BS EN 1021 - 1 :2006 (cigarette), BS EN 1021 - 2:2006 (match), BS 7176 :2007 Low Hazard <i>Note: Flammability performance is dependent on foam used.</i>
*Light Fastness	5 (ISO 105 - B02:1999)
*Fastness to Rubbing	Wet: 4 Dry: 4 (ISO 105 - X12:2002)
Maintenance	Vacuum regularly. Wipe clean with a damp cloth or shampoo using proprietary upholstery shampoo.
Colour Matching	Batch to batch variations in shade may occur within commercial tolerances.

\*Tested in accordance with BS 2543:1995/2004. Further information available on request.

Please note that ultimate seam performance is dependent on seam construction, and needle and thread type. We recommend that appropriate sewing advice be taken.

**Note:** We reserve the right to alter technical specifications without notice.

The Unregistered Design Rights and the Copyright in all designs are the exclusive property of Camira Fabrics Limited.